

नवोदय विद्यालय समिति

शिक्षा मंत्रालय

(स्कूल शिक्षा एवं साक्षरता विभाग)

भारत सरकार

बी-१५, संस्थानिक क्षेत्र, सेक्टर-६२

नोएडा - २०१३०७ (उत्तरप्रदेश)

वेबसाइट - www.navodaya.gov.in



Navodaya Vidyalaya Samiti

Ministry of Education

(Dept. of School Education & Literacy)

Government of India

B-15, Institutional Area, Sector-62

Noida - 201307 (Uttar Pradesh)

Website - www.navodaya.gov.in

F.No. 16-2/2017-NVS(SA)/62.

Date: 10.02.2026

To

Deputy Commissioner
Navodaya Vidyalaya Samiti
All Regional offices

Sub: Implementing new design of uniform for students w.e.f. July 2026-reg

Sir/Madam

Variation in colour, design, fabric design and stitching style in the uniform worn by students of different JNVs were noticed during participation of students of JNVs at several national/ state level programmes viz. "Pariksha Pe Charcha", National Integration Meet etc.

In order to ensure standardization in uniform of students, NIFT was approached by NVS to suggest uniform design for students considering prevalent designs and material. NIFT was requested to consider the budgetary norms also.

NIFT Mumbai has done the research and designing of the uniforms. They have surveyed students and teachers of JNVs across the country to propose uniform designs. Based on the opinion of students on the proposed uniform designs, the new uniform designs have been finalized and to be used with effect from July 2026.

1. Norms of Distribution:

- A. For JNVs located in Tropical climate/coastal areas in Andhra Pradesh, Telangana, Kerala, Odisha, Karnataka, West Bengal, Gujarat, Daman & Diu, Maharashtra, Goa, Dadra & Nagar Haveli, Andaman Nicobar, Puducherry and Lakshadweep.

S.No.	Uniform Item	Quantity per student	Frequency	Tentative Rate per piece for the financial year 2026-27
1	Full Shirt (Boys)	02	Every year	Rs. 300/-
2	Full Kurta (Girls)	02	Every year	Rs. 300/-
3	Trousers (Boys & Girls)	02	Every year	Rs. 350/-
4	Waist Coat (Boys & Girls)	01	Every year	Rs. 350/-
5	House T-Shirt (Boys & Girls)	01	Every year	Rs. 300/-
6	Track Suit (Boys & Girls)	01	In class VI, IX and XI	Rs. 500/-
7	Blazer (Boys & Girls)	01	In class VI, IX and XI	Rs. 1400/-
8	Shoe (Black) (Boys & Girls)	01	Every year	Rs. 250/-
9	Sports Shoe (Boys & Girls)	01	Every year	Rs. 250/-
10	Tie (Boys)	01	Every year	Rs. 35/-
11	Belt (Boys & Girls)	01	Every year	Rs. 50/-
12	Socks (Black) (Boys & Girls)	02	Every year	Rs. 20/-
13	Sports Socks (Black) (Boys & Girls)	01	Every year	Rs. 20/-

(Handwritten signature)



B. For JNVs located in extreme summer and normal winter areas in Punjab, Haryana, Rajasthan, Delhi, Uttar Pradesh, Bihar, Jharkhand, Chattisgarh, Madhya Pradesh and Chandigarh










S.No.	Uniform Item	Quantity per student	Frequency	Tentative Rate per piece for the financial year 2026-27
1	Full Shirt (Boys)	02	Every year	Rs. 300/-
2	Full Kurta (Girls)	02	Every year	Rs. 300/-
3	Trousers (Boys & Girls)	02	Every year	Rs. 350/-
4	Waist Coat (Boys & Girls)	01	Every year	Rs. 350/-
5	House T-Shirt (Boys & Girls)	01	Every year	Rs. 300/-
6	Track Suit (Boys & Girls)	01	In class VI, IX and XI	Rs. 500/-
7	Blazer (Boys & Girls)	01	In class VI, IX and XI	Rs. 1400/-
8	Pullover (Boys & Girls)	01	In class VI, IX and XI	Rs. 500/-
9	Shoe (Black) (Boys & Girls)	01	Every year	Rs. 250/-
10	Sports Shoe (Boys & Girls)	01	Every year	Rs. 250/-
11	Tie (Boys)	01	Every year	Rs. 35/-
12	Belt (Boys & Girls)	01	Every year	Rs. 50/-
13	Socks (Black) (Boys & Girls)	02	Every year	Rs. 20/-
14	Sports Socks (Black) (Boys & Girls)	01	Every year	Rs. 20/-

C. For JNVs located in extreme winter areas in Jammu & Kashmir, Ladakh, Uttarakhand, Himachal Pradesh and North Eastern States.






S.No.	Uniform Item	Quantity per student	Frequency	Tentative Rate per piece for the financial year 2026-27
1	Full Shirt (Boys)	02	Every year	Rs. 300/-
2	Full Kurta (Girls)	02	Every year	Rs. 300/-
3	Trousers (Boys & Girls)	02	Every year	Rs. 350/-
4	Waist Coat (Boys & Girls)	01	Every year	Rs. 350/-
5	House T-Shirt (Boys & Girls)	01	Every year	Rs. 300/-
6	Track Suit (Boys & Girls)	01	In class VI, IX and XI	Rs. 500/-
7	Blazer (Boys & Girls)	01	In class VI, IX and XI	Rs. 1400/-
8	Pullover (Boys & Girls)	01	In class VI, IX and XI	Rs. 500/-
9	Shoe (Black) (Boys & Girls)	01	Every year	Rs. 250/-
10	Sports Shoe (Boys & Girls)	01	Every year	Rs. 250/-
11	Woolen socks (Black) (Boys & Girls)	02	In class VI, IX and XI	Rs. 50/-
12	Tie (Boys)	01	Every year	Rs. 35/-
13	Belt (Boys & Girls)	01	Every year	Rs. 50/-

14	Socks (Black) (Boys & Girls)	02	Every year	Rs. 20/-
15	Sports Socks (Black) (Boys & Girls)	01	Every year	Rs. 20/-
16	Body warmer (Grey/Black) (Upper & lower) (Boys & Girls)	01	Every year	Rs. 400/-

2. Colour of Items of Uniform:

S.No.	Uniform Item	Colour/ Colour code	Colour Tile
1	Full Shirt (Boys)/ Full Kurta (Girls)	Pantone/13-4421 TSX Castaway	 PANTONE 13-4421 TSX Castaway
3	Trousers (Boys & Girls)	Pantone/19-4040 TSX Blue Pansy	 PANTONE 19-4040 TSX Blue Pansy
4	Waist Coat (Boys & Girls)	Pantone/19-4040 TSX Blue Pansy Pantone/13-4421 TSX Castaway - for stripe details	 PANTONE 19-4040 TSX Blue Pansy  PANTONE 13-4421 TSX Castaway
5	House T-Shirt (Boys & Girls)	<ul style="list-style-type: none"> Pantone/18-1656 TSX Fierce Pantone/ 13-0763 TSX Owl's eye Pantone/16-5128 TSX Jaded Pantone/18-4063 TSX Blue Tattoo Pantone/19-3949 TSX Dream of Cotton - for panels, sleeve hem and collar 	 PANTONE 18-1656 TSX Fierce  PANTONE 13-0763 TSX Owl's eye  PANTONE 16-5128 TSX Jaded  PANTONE 18-4063 TSX Blue Tattoo  PANTONE 19-3949 TSX Dream of cotton

Handwritten signature

6	Track Suit (Boys & Girls)	Pantone/19-3949 TSX Dream of Cotton	
7	Blazer (Boys & Girls)	Pantone/19-4040 TSX Blue Pansy	
8	Pullover (Boys & Girls)	Pantone/19-3949 TSX Dream of Cotton	
12	Tie (Boys)	Pantone/19-4040 TSX Blue Pansy	
13	Belt (Boys & Girls)	Pantone/19-4040 TSX Blue Pansy and white	
16	Body warmer set (Upper & lower) (Boys & Girls)	Grey/Black	

3. Expenditure Norms

Sl.No.	For JNVs	Expenditure norms per student per year for the financial year 2025-26	Remark
1	For JNVs located in tropical climate/coastal areas in Andhra Pradesh, Telangana, Kerala, Odisha, Karnataka, West Bengal, Gujarat, Daman & Diu, Maharashtra, Goa, Dadra & Nagar Haveli, Andaman Nicobar, Puducherry and Lakshadweep	Rs. 2848/-	<i>The expenditure norms is revised annually by 5% or as per increase in CPI (Consumer Price Index) whichever is less</i>
2	For JNVs located in extreme summer and normal winter areas in Punjab, Haryana, Rajasthan, Delhi, Uttar Pradesh, Bihar, Jharkhand, Chattisgarh, Madhya Pradesh and Chandigarh	Rs. 3560/-	
3	For JNVs located in extreme winter areas in Jammu & Kashmir, Ladakh, Uttarkhand, Himachal Pradesh and North Eastern States.	Rs. 3987/-	

[Handwritten signature]

4. Distribution schedule

- a. All students shall be provided all items of uniforms including shoes & socks to be given every year by the end of first week of re-opening of JNVs after Summer vacation/reporting of students after admission.
- b. Track suit should be provided to students of Class VI, IX & XI by the end of first week of re-opening of JNVs/reporting of students after admission.
- c. Blazers, pullovers, body warmers & woolen socks should be provided to students of Class VI, IX & XI at least two weeks before setting up of winters.
- d. Storekeeper shall maintain class-wise record of issue of each uniform item to every student in a register. Signature of students as well as parents/guardians should be obtained to establish the authenticity of the issuance of the item.
- e. Provision for towel and slippers are discontinued from Academic Session 2026-27. These items are to be arranged by parents.
- f. By the second week of July every year, Regional Office should submit a report on procurement & distribution of uniform items to students in following format:-

Sl.No.	JNV (District)	Total no. of students	Total no. of students issued uniforms	No. of students for whom Blazer, pullover, track suit, tie, belt, woolen socks, body warmer have been procured	Uniforms procured: Ready-made/ cloth & stitching	Expenditure incurred

5. Issue of Uniforms to Staff Wards

- a. Uniforms to staff wards studying in the JNV (not admitted through JNVST/LEST) shall be issued by the JNV on payment of cost i.e. amount equal to expenditure norms.
- b. Uniforms issued to staff wards shall be maintained by them only.

6. Procurement of Uniform items

Uniform items should be procured at RO/JNV Level through GEM ensuring uniformity of design, quality and adhering to expenditure norms.

It is requested to bring the above changes in the knowledge of all stakeholders i.e. Students, Parents and staff and also issue directions to all JNVs for implementation and compliance.

Regards

Encl. Specifications for material, colour, quality and stitching

Yours faithfully,


(Vijai Kumar Bajpai)
Deputy Commissioner (SA)

Copy to- The AC (IT), NVS, HQrs. - with a request to upload on the NVS website.

NAVODAYA VIDYALAYA SAMITI
Standardised Specifications for School Uniforms
For procurement and stitching across JNVs

Navodaya Vidyalaya Samiti (NVS) aims to ensure uniformity, quality, durability, and comfort in school uniforms across all Jawahar Navodaya Vidyalayas. In view of the diversity of regions, climatic conditions, and tailoring practices followed across schools, it is essential to provide **standardised technical specifications** for fabrics and uniforms used in school uniforms.



Fabric Specifications:

1. Detailed specification for woven shirting fabric:

The shirt/kurta is made using the Castaway shirting fabric as per the below mentioned specifications:



S.NO	CHARACTERISTIC	REQUIREMENT
1	Mass,g/m ²	110-130(+5% or -2.5%)
2	Fibres composition,percent-Polyester	67 (+3 or -3 unites)
3	Fibres composition,percent-Cotton	Remainder
4	Breaking Strength on 5cm x 20 cm strip,N,Min	Warpway-440(44.9) ; Weftway-350(35.7)
5	Tear Strength,N,Min	Warpway-10(1.0) ; Weftway-9(0.9)
6	Dimensional stability to dry heat at 150 +/- 2 C, percent , Max	Warpway-1.0 ; Weftway-1.0
7	Soil release efficiency,Min	Initial(Finished-Stain released Grade 5 ; After 50 washes-Stain release Grade 5
8	Abrasion resistance 5000 rubs(Martindale method)	There shall not be any breakage of two threads of the fabric
9	Minimum colour fastness ratings to:	
a	Light(Change in colour)	5
b	Washing test C:	Change in colour-4 ; Staining of adjacent fabrics - 3-4
c	Dry heat at 150 +/- 2 C	4
d	Perspiration(acidic and Alkaline)	Change in colour-4 ; Staining of adjacent fabrics - 3-4
e	Rubbing	Dry-4 ; Wet-3

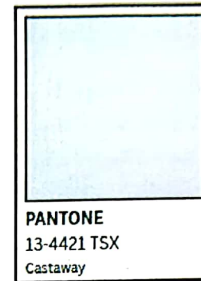
S.NO	CHARACTERISTIC	REQUIREMENT
f	Hot pressing at 150 +/-2 C for 15s in dry state	Change in colour-4 ; Staining of adjacent fabrics-4
10	Anti-Bacterial activity value	If agreed to between the buyer and the seller, the suiting shall have anti-bacterial activity value (initially and after 30 washes) greater than 1 when tested o by the absorption method prescribed in ISO 20743.



2. Detailed specification for woven suiting fabric for pants and waistcoat:

The trousers and waistcoat are made using Blue Pansy stripe details on waistcoat to be added using the shirting fabric - Castaway.

fabric. The



S.NO	CHARACTERISTIC	REQUIREMENT
1	Mass,g/m ²	200-220(+5% or -2.5%)
2	Fibres composition,percent-Polyester	67 (+3 or -3 unites)
3	Fibres composition,percent-Cotton	Remainder
4	Breaking Strength on 5cm x 20 cm strip,N,Min	Warpway-880(89.7) ;Weftway - 640(65.2)
5	Tear Strength,N,Min	25(2.55)
6	Dimensional stability to dry heat at 150 +/- 2 °C,percent ,Max	Warpway-1.0 ; Weftway-1.0
7	Soil release efficiency,Min	Initial(Finished-Stain released Grade 5 ; After 50 washes-Stain release Grade 5
8	Minimum colour fastness ratings to:	
a	Light(Change in colour)	5
b	Washing test 2	Change in colour-4 ; Staining of adjacent fabrics - 3-4
c	Dry heat at 150 +/- 2 °C	4
d	Perspiration(acidic and Alkaline)	Change in colour-4 ; Staining of adjacent fabrics - 4

S.NO	CHARACTERISTIC	REQUIREMENT
e	Rubbing	Dry-4 ; Wet-3
f	Hot pressing at 150 +/-2° C for 15s in dry state	Change in colour-4 ; Staining of adjacent fabrics-4
g	Dry cleaning	Change in colour-4 ; Staining of adjacent fabrics-4
9	Anti-Bacterial Activity value	If agreed to between the buyer and the seller, the suiting shall have anti-bacterial activity value (initially and after 30 washes) greater than 1 when tested by the absorption method prescribed in ISO 20743.



3. Detailed specification for Pique knit fabric for sports t-shirt:

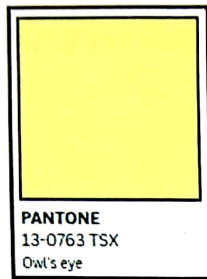
The t-shirts are made using Pique knit in the house colour.

The panels, sleeve hem and collar are in the “dream of cotton” darker blue shade.

The collar and sleeve hem to

be made using

rib knit.



S.NO	CHARACTERISTIC	REQUIREMENT
1	Mass,g/m ²	220-240(+5% or -2.5%)
2	Fibres composition,percent-Polyester	67 (+3 or -3 unites)
3	Fibres composition,percent-Cotton	Remainder
4	Breaking Strength on 5cm x 20 cm strip,N,Min	Warpway- 90 kg min ;Weftway - 60 kg min
5	Machine Gauge	24-26 (Fine Gauge)
5	Tear Strength,N,Min	25(2.55)
6	Dimensional stability to dry heat at 150 +/- 2 °C,percent ,Max	Max 2%
7	Minimum colour fastness ratings to:	
a	Light(Change in colour)	4
b	Washing test 2	Change in colour-4 ; Staining of adjacent fabrics - 4-5
c	Dry heat at 150 +/- 2 °C	4

BP

S.NO	CHARACTERISTIC	REQUIREMENT
d	Perspiration(acidic and Alkaline)	Change in colour-4 ; Staining of adjacent fabrics - 4
e	Rubbing	Dry-4 ; Wet-3
f	Hot pressing at 150 +/-2° C for 15s in dry state	Change in colour-4 ; Staining of adjacent fabrics-4
8	Anti-Bacterial Activity value	If agreed to between the buyer and the seller,the suiting shall have anti-bacterial activity value(initially and after 30 washes)greater than 1 when tested o by the absorption method prescribed in ISO 20743.

4. Detailed specification for knit fabric for track suit:

Single jersey fabric for the track suit jacket and pants. There is white stripe detail on the jacket and side seam of the track pants. Rib knit for hem of jacket and sleeve hem of the jacket.

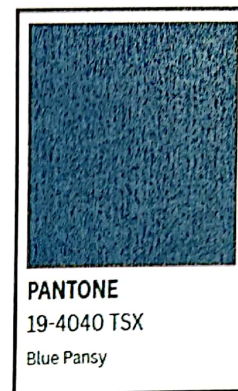


S.NO	CHARACTERISTIC	REQUIREMENT
1	Mass,g/m ²	180-200(+5% or -2.5%)
2	Fibres composition,percent-Polyester	100 (+3 or -3 unites)
3	Approx Count of yarn removed from fabric	Knitted Type A : 82 (D)
		Knitted Type B : 163 (D)
4	Approximate Threads per unit length (inch)	Threads (+5%/-2%)
		Wales: 35
		Course : 102
5	Dimensional Changes to Washing (%) at 40 deg. After 1 wash, tumble dry	Wales 0.7 shrinkage
		Course 0.5 shrinkage
6	Colour Fastness to washing A1 at 40 deg.	Change in Colour : 4-5
		Stianing on Polyester: 4-5
7	Colour Fastness to Artificial Light (Xenon Arc Lamp) (BWS 5)	5 rating

Handwritten signature

5. Detailed specification for woven wool blend suiting fabric:

The winter blazer to be developed using a wool blend fabric in Blue Pansy colour fabric with following specifications:



S.NO	CHARACTERISTIC	REQUIREMENT
1	Mass,g/m ²	240-260(+5% or -2.5%)
2	Fibres composition,percent-Polyester	67 (+3 or -3 unites)
3	Fibres composition,percent-Wool	Remainder
4	Breaking Strength on 5cm x 20 cm strip,N,Min	Warpway- 90 kg min ;Weftway - 60 kg min
5	Tear Strength,N,Min	25(2.55)
6	Dimensional stability to dry heat at 150 +/- 2 °C,percent ,Max	Max 2%
7	Minimum colour fastness ratings to:	
a	Light(Change in colour)	5
b	Washing test 2	Change in colour-4 ; Staining of adjacent fabrics - 3-4
c	Dry heat at 150 +/- 2 °C	4
d	Perspiration(acidic and Alkaline)	Change in colour-4 ; Staining of adjacent fabrics - 4
e	Rubbing	Dry-4 ; Wet-3
f	Hot pressing at 150 +/-2° C for 15s in dry state	Change in colour-4 ; Staining of adjacent fabrics-4

Handwritten signature

S.NO	CHARACTERISTIC	REQUIREMENT
g	Dry cleaning	Change in colour-4 ; Staining of adjacent fabrics-4
8	Anti-Bacterial Activity value	If agreed to between the buyer and the seller, the suiting shall have anti-bacterial activity value (initially and after 30 washes) greater than 1 when tested by the absorption method prescribed in ISO 20743.

[Handwritten signature]

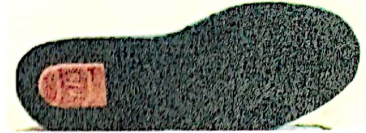
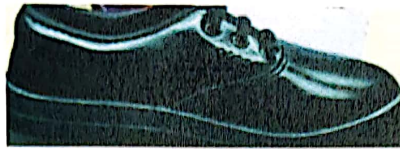
6. Detailed specification for pullover:



S.NO	CHARACTERISTIC	REQUIREMENT
1	Mass,g/m ²	280-320(+5% or -2.5%)
2	Fibres composition, percent - Acrylic	100 (+5 or -5 units)
3	Fibres composition,percent-Wool	Remainder
4	Breaking Strength	Wales direction: ≥ 250 N Courses direction: ≥ 200 N
5	Tear Strength,N,Min	Wales direction: ≥ 15 N Courses direction: ≥ 12 N
6	Dimensional stability to dry heat at 150 +/- 2 °C,percent ,Max	Max 2%
7	Pilling Resistance:	Min grade 3-4
8	Minimum colour fastness ratings to:	
a	Light(Change in colour)	5
b	Washing test 2	Change in colour-4 ; Staining of adjacent fabrics - 3-4
c	Dry heat at 150 +/- 2 °C	4
d	Perspiration(acidic and Alkaline)	Change in colour-4 ; Staining of adjacent fabrics - 4
e	Rubbing	Dry-4 ; Wet-3
f	Hot pressing at 150 +/-2° C for 15s in dry state	Change in colour-4 ; Staining of adjacent fabrics-4
g	Dry cleaning	Change in colour-4 ; Staining of adjacent fabrics-4

261

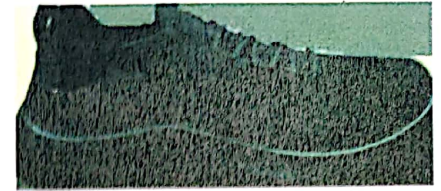
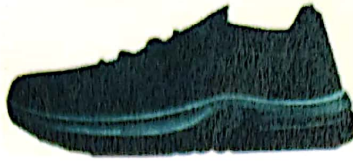
7. Black Formal School Shoes:



S.NO	REQUIREMENT	DESCRIPTION
1	Material	<p>Upper: PU / PVC coated synthetic leather, thickness 1.4–1.6 mm (± 0.2 mm)</p> <p>Lining: Knitted fabric laminated with PU foam (3–3.5 mm)</p> <p>Insole: EVA padded insole, minimum 3 mm thickness</p> <p>Sole: Direct injection moulded PVC / EVA sole</p> <ul style="list-style-type: none"> Density: 0.70–0.95 g/cc <p>Fastening: Black polyester laces (boys) or Buckles (girls)</p> <p>1. The length of lace in Boys' Shoes will be as follows- a. For Size 8-1: 75 cm. minimum. b. For Size 2-5: 90 cm. minimum. c. For Size 6-10: 110 cm. minimum</p> <p>Eyelet: Black enameled Brass eyelet – 4 mm with washer</p>
2	Soling Pattern	<p>1.3.1 The soling shall not include continuous lateral thread patterns or any other features, such as sharp corners at the base of the sole pattern, which may accelerate or cause premature crack formation.</p> <p>1.3.2 The design should be such that the sole will have adequate skid resistance with cleat height of min. 2 mm.</p> <p>1.3.3 Forepart thickness shall be min. 8 mm.</p> <p>1.3.4 Heel thickness shall be min. 13 mm.</p> <p><i>NOTE – The pattern of sole may have significant effect on the formulation of premature cracks and safety on slippery surfaces.</i></p>
3	Design and manufacturer guide	<p>1.4.1 The upper shall be closed with lock stitching using nylon/polyester/blended threads. The number of stitches shall be 3 to 4 per centimeter. All loose ends of the threads shall be secured.</p> <p>1.4.2 Upper shall be lasted cemented/strobal application lasting method</p> <p>1.4.3 The sole will be EVA expanded sole density 0.22-0.26</p>
4	Finish	The upper of the shoe shall be finished by polishing and brushing to impart shine to the shoes.

5	Sole Hardness	The hardness of the sole shall be measured in not less than 4 days but not more than 90 days shall be within 50 ± 10 Shore 'A'/IRHD asprescribed in IS 12240 [part 2] 1988
6	Resistance cut growth(flexing test)for sole	When parts of sole are tested in accordance with the method prescribed in IS 12240 (Part 7): 1988 and the maximum cut growth not more than 300% till 30000 flexes .
7	Resistance for Upper	When parts of the upper are tested in accordance with the method prescribed in SATRA TM 55 (BALLY flexing), no cracking shall occur during 80,000 flex cycles.
8	Tear strength for Upper material	When parts of the upper are tested in accordance with the method prescribed in SATRA TM 30, the value shall not be less than 3 kg.
9	Bond strength Upper/Outsole bond strength	The bond strength when tested as per IS 15298 shall not be less than 3 N unless there is tearing of the material in which case the tearing strength shall not be less than 3 N/mm.
10	Marking	The size and fitting of the shoe shall be legibly stamped on the waist of the full sock. The manufacturers name or recognised trademark, if any, together with the year of supply may also be legibly stamped on the waist of the sock.
11	Packing	<ul style="list-style-type: none"> • Each pair of shoes shall be wrapped in tissue paper and put in a cardboard carton. Further 12 pairs packed in one cardboard carton. • Each carton shall be marked with the size and fitting of the shoes.

8. Black Knitted Sports Shoes:



S.NO	REQUIREMENT	DESCRIPTION
1	Material	<p>UpperMaterial Knitted polyester fabric / engineered mesh</p> <p>Upper Construction: One-piece or panelled knit with reinforced zones at toe and heel</p> <p>Upper Weight: Lightweight, breathable construction suitable for prolonged wear</p> <p>Toe Protection: Reinforced knitted structure / fused overlay to prevent abrasion</p> <p>Heel Counter: Soft internal heel counter with padding for ankle support</p> <p>Lining: Soft knitted polyester lining, moisture-absorbing</p> <p>Insole: Removable EVA cushioned insole, minimum 3–4 mm thickness</p> <p>Midsole: Removable EVA cushioned insole, minimum 3–4 mm thickness</p> <p>Outsole: Rubber / Phylon outsole with anti-slip tread pattern</p> <p>Fastening: Polyester lace fastening</p>

20

2	Soling Pattern	<p>1.3.1 The soling shall not include continuous lateral thread patterns or any other features, such as sharp corners at the base of the sole pattern, which may accelerate or cause premature crack formation.</p> <p>1.3.2 The design should be such that the sole will have adequate skid resistance with cleat height of min. 3 mm.</p> <p>1.3.3 Forepart thickness shall be min. 8 mm.</p> <p>1.3.4 Heel thickness shall be min. 13 mm.</p> <p><i>NOTE – The pattern of sole may have significant effect on the formulation of premature cracks and safety on slippery surfaces.</i></p>
3	Design and manufacturer guide	<p>1.4.1 The upper shall be closed with lock stitching using nylon/polyester/blended threads. The number of stitches shall be 3 to 4 per centimeter. All loose ends of the threads shall be secured.</p> <p>1.4.2 Upper shall be lasted by string lasting method</p> <p>1.4.3 The sole will be directly injected PVC expanded sole.</p>
4	Finish	The upper of the shoe shall be finished by polishing and brushing to impart shine to the shoes.
5	Sole Hardness	The hardness of the sole shall be measured in not less than 4 days but not more than 90 days shall be within 50 ± 10 Shore 'A'/IRHD asprescribed in IS 12240 [part 2] 1988
6	Resistance cut growth(flexing test)for sole	When parts of sole are tested in accordance with the method prescribed in IS 12240 (Part 7): 1988 and the maximum cut growth not more than 300% till 30000 flexes .
7	Resistance for Upper	When parts of the upper are tested in accordance with the method prescribed in SATRA TM 55 (BALLY flexing), no cracking shall occur during 80,000 flex cycles.
8	Tear strength for Upper material	When parts of the upper are tested in accordance with the method prescribed in SATRA TM 30, the value shall not be less than 3 kg.
9	Bond strength Upper/Outsole bond strength	The bond strength when tested as per IS 15298 shall not be less than 3 N unless there is tearing of the material in which case the tearing strength shall not be less than 3 N/mm.

10	Marking	The size and fitting of the shoe shall be legibly stamped on the waist of the full sock. The manufacturer's name or recognised trademark, if any, together with the year of supply may also be legibly stamped on the waist of the sock.
11	Packing	<ul style="list-style-type: none">• Each pair of shoes shall be wrapped in tissue paper and put in a cardboard carton. Further 12 pairs packed in one cardboard carton.• Each carton shall be marked with the size and fitting of the shoes.

PA

Tie



S.NO	CHARACTERISTIC	REQUIREMENT
1	Mass,g/m ²	200-240(+5%or-2.5%)
2	Fibrescomposition,percent-Polyester (woven)	100 (+5 or-5 units)
3	Fastening	Adjustableloop
4	Width	6-8cm(Pre-sizedwithadjustable loopfastening)
5	Interlining	Lightweightfusible
6	Logo Embroideredin white	

9.SchoolBelt



S.NO	CHARACTERISTIC	REQUIREMENT
1	Dimensions	1.5cm width,27-40"
2	BeltMaterial	Nylon
3	BuckleMaterial	Rust-freebrass/acrylicwithLogo printed

Handwritten signature or mark.